

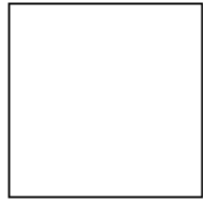
Mini manger Repro pattern



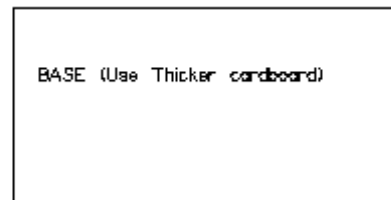
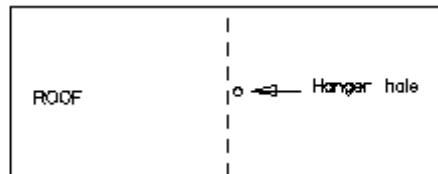
The following is a pattern for a Jesus in the manger ornament. And yes, it is smaller than the typical manger ornament you see with the plastic figures.

Notes:

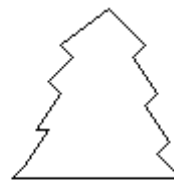
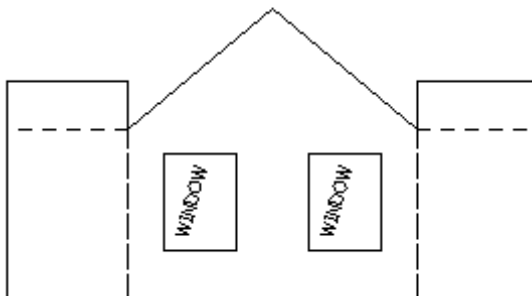
- The Jesus graphic below should print in 100% size.
- I have added a 1 inch reference square, in case it does not print 100%.
- The red cello is attached from the back.
- If you use real silver glitter, it will tarnish like the real ornaments, giving it a vintage look.
- Also the trees are painted green after the glitter is applied.
- I recommend gluing the Jesus graphic to a light cardstock. And a spray of clear gloss paint to make it shine



1" test Sq.



BASE (Use Thicker cardboard)



Trees